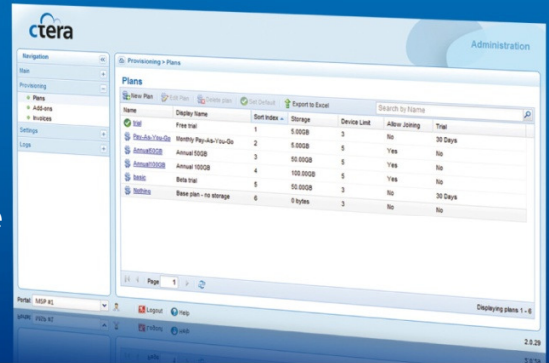




CTERA Portal™: Cloud Storage Delivery Platform

Deliver Hybrid Cloud / On-Premises Data Protection, Storage and Collaboration

- Rapidly launch own-branded managed services
- Available as SaaS, virtual appliance or physical appliance
- Supports multi-tier channels and distributed enterprises



CTERA Portal enables services providers and enterprises to deliver managed backup, disaster recovery, file-based collaboration and storage, combining on-premises appliances, managed agents and a flexible back-end cloud storage infrastructure. A multi-tier, multi-tenant environment, CTERA Portal allows rapid deployment of an own-branded solution, whether used as SaaS or deployed in a private cloud.

Cloud Service Provisioning

Create and manage service plans that include prepaid plans, pay-as-you-go and voucher codes. Easily integrate with Active Directory, 3rd party billing and service automation systems.

Centralized Management

Working in concert with CTERA’s Cloud Attached Storage appliances and managed agents, CTERA Portal makes it easy to manage numerous sites centrally and remotely, including real-time monitoring, extensive logging and alerting, and firmware upgrades.

Choice of Storage Back-End

CTERA Portal integrates with a variety of storage infrastructure providers, including public cloud services and cloud storage platforms, such as Amazon S3, Nirvanix, Rackspace CloudFiles, Openstack, EMC Atmos, IBM GPFS, Hitachi HCP, Caringo, Mezeo and Scality as well as DAS or SAN.

SaaS Edition

Hosted “Virtual Portal”

- Run your own branded data protection services
- Hosted by one of CTERA’s cloud service partners
- Zero CAPEX

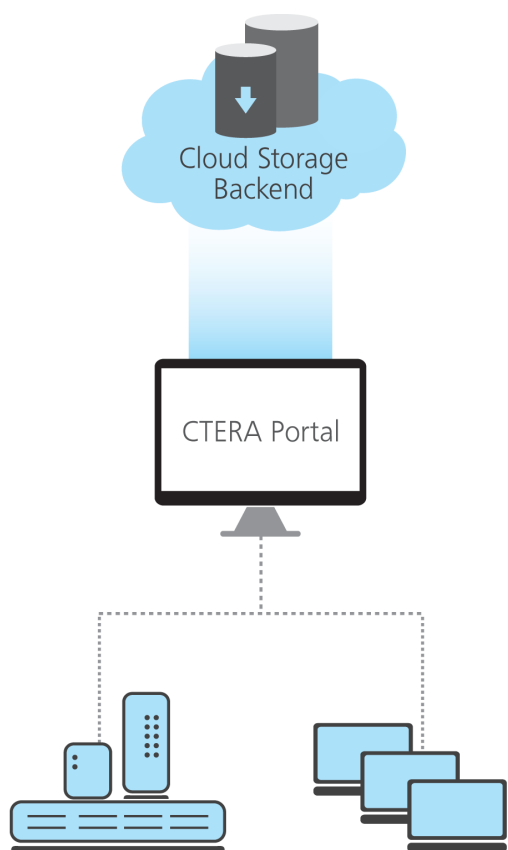
Datacenter Edition

Virtual Appliance

- Choice of private and public cloud storage back-ends
- Create unlimited “virtual portals” for channel partners or enterprise teams/depts.
- Manage thousands of sites

Physical Appliance

- CTERA P1200 36TB rack-mount appliance
- Install in minutes in your private datacenter
- Recommended for up to 500 sites/branches



Managed CTERA Appliances and Agents

CTERA Portal is a service delivery platform for cloud-based storage services, using a variety of cloud infrastructure back-ends and working seamlessly with CTERA appliances and managed agents.



About CTERA Networks

CTERA™ Networks revolutionizes data protection and storage for SMBs and enterprise branch offices with Cloud Attached Storage®, a solution that combines cloud storage services with on-premises appliances in an all-in-one solution for backup and recovery, shared storage and file-based collaboration.

CTERA was the first company to introduce cloud storage gateway appliances, and its scalable cloud service delivery platform enables service providers and IT resellers to easily deliver managed cloud storage services to their customers, using the public or private cloud backend of their choice.

For more information, visit www.ctera.com.

Cloud Service Delivery

- User account and user group management, including access control, subscription plans and quotas
- Customized service plans : Pay-as-you-go, prepaid vouchers, time-limited plans and add-ons
- End-user portal UI and email template branding
- Real-time status and usage monitoring
- Automated billing and invoicing
- “Virtual Portals” for channel partners, managed and branded separately (multi-tenancy)
- “Team Portals” for enterprise teams and departments
- Deep Active Directory integration for user authentication
- Extensive logging and reporting, automated end-user email reports

Centralized Management

- Real-time monitoring of connected appliances & agents
- Remote firmware updates
- Template-based management of appliance and agent configuration
- Detailed event logging

Cloud Backup & Synchronization

- Optimized incremental cloud backup with data compression
- Block-level global de-duplication
- Configurable scheduling and bandwidth throttling
- Folder and attribute-based backup sets
- Restore methods: Windows Previous Versions, Virtual cloud drive, local appliance Web UI and online via CTERA Portal
- Previous file versions with nested snapshot retention
- Secure Web-based direct access to backups from anywhere
- Offline seeding option for assisted initial backup
- Read/write shared cloud folders with multi-user synchronization
- Project-based and time-limited invitation-based cloud file sharing
- 256-bit AES encryption and SHA-1 fingerprinting over 128-bit SSL, user-specific passphrase protection

End-User Portal

- Branded to service provider corporate identity
- Real-time monitoring of backups and attached appliances
- Recovery of backups to appliance or to any PC
- Remote access to files on the CTERA appliance and to cloud files
- Invitations to share own files with other users
- Self-provisioning of additional cloud services

Datacenter Edition

- Deploy as Virtual Appliance or as P1200 Physical Appliance
- Back-end storage: Amazon S3, Rackspace CloudFiles, Openstack EMC Atmos, Hitachi HCP, IBM GPFS, Nirvanix, Caringo, Mezeo, Scality RING, or any SAN / DAS storage array
- Web browser required to access all CTERA Portal editions: Microsoft IE 7.0, Mozilla Firefox 3.0, Chrome 5.0 and newer
- Replication, high availability and load balancing supported
- Multi-tenancy: Create virtual portals for partners, depts.
- Virtual appliance requirements: VMware ESXi 4.1 or newer, with 4GB RAM (8GB recommended)